

# Drum Valve System

## Drum Valve range

## Drum Valve



**2" BSP\***



**56x4\***



**70x6**



**2.5"x5\***

Drum Valve 2"BSP 3pin EPDM: 743-007  
 Drum Valve 2"BSP 3 pin Viton: 743-008  
 Drum Valve 2"BSP 3 pin FKM-HiPer 743-038  
 Drum Valve 56x4 3 pin EPDM: 743-046  
 Drum Valve 56x4 3 pin Viton: 743-047  
 Drum Valve 56x4 3 pin Aflas: 743-048  
 Drum Valve 70x6 3 pin EPDM: 743-126  
 Drum Valve 70x6 3 pin Viton: 743-125  
 Drum Valve 2.5"x5 3 pin EPDM: 743-086  
 Drum Valve 2.5"x5 3 pin Viton: 743-081

See note 1)



**DV Coupler self-venting**



**DV Coupler vapour-recovery**

### DV Coupler—self venting

Drum Valve Coupler 3 pin EPDM: 744-002  
 Drum Valve Coupler 3 pin Viton: 744-003  
 Drum Valve Coupler 3 pin Aflas: 744-004

See note 1)

### DV Coupler—vapour recovery

Drum Valve Coupler 3 pin EPDM: 744-007  
 Drum Valve Coupler 3 pin Viton: 744-008  
 Drum Valve Coupler 3 pin Aflas: 744-009

See note 1)



**DV Coupler 1800**



**Heavy Duty Coupler\***

### DV Coupler1800—flow control

DV Coupler 1800 3 pin EPDM: 744-078  
 DV Coupler 1800 3 pin Viton: 744-094

See note 1)

### Heavy Duty Coupler

Heavy Duty Coupler 3 pin Viton: 744-082

See note 1)

### Fill-head —vapour recovery

Fill-head 3pin EPDM: 744-022  
 Fill-head 3pin Viton: 744-023  
 Fill-head 3pin Aflas: 744-024

See note 1)



**Fill-head\***



**Rinse socket**

### DV Rinse socket

Rinse socket 3 pin EPDM: 2DV3-001

Other seal materials available on request

All items are available in stainless steel 304 and 316\*

Note 1) Other seal materials and key codes available on request

safe, cost-efficient, easy-to-use

# Drum Valve System Spare Parts



"A" Drum Valve extractor housing

"B" Drum Valve Sealing Ring

"C" Drum Valve Profile Seal

"D" Drum Valve Spring Retainer

"E" Drum Valve Spring

"F" Drum Valve Down Tube Assembly



### Drum Valve Sealing Ring

EPDM: 102-107  
Viton: 102-108  
Aflas: 102-109  
FKM-HiPer: 102-110



### Drum Valve Profile Seal

EPDM: 102-086  
Viton: 102-085  
Aflas: 102-088  
FKM-HiPer: 102-089



### Drum Valve Plastic Dip-tube

Outer foot dip-tube: 743-203/xxx



### Drum Valve Plastic Dip-tube

Inner foot dip-tube: 743-224/xxx

Where "xxx" is the length of the tube in mm.

**Also available with stainless steel dip-tube for special applications**



### Tamper Evident Cap

3 pin cap: 102-079  
4 pin cap: 102-081

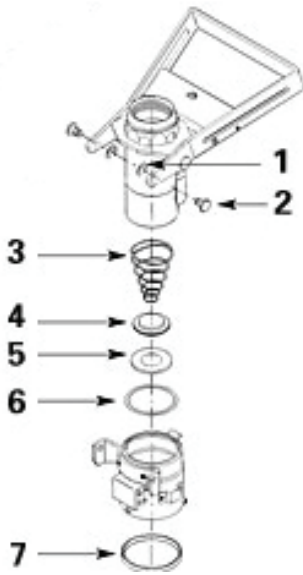


### Clinch Ring

3 pin profile: 729-860  
3 pin flat profile: 729-861  
\*universal profile: 729-862 (fits 4 pin valves)

safe, cost-efficient, easy-to-use

## Drum Valve Coupler Spare Parts



"1" Retaining Clip for the Drum Valve handle  
Grooved Handle Pin on the Drum Valve Coupler

"2" Grooved Handle Pin for the Drum Valve Coupler

"3" Dry Break Spring for the Drum Valve Coupler

"4" Dry Break Insert for the Drum Valve Coupler

"5" Drum Valve Coupler Probe Seal

"6" Drum Valve Coupler Body O-Ring

"7" Drum Valve Coupler Main Gasket



**Drum Valve Coupler  
Probe Seal \***  
EPDM: 102-073  
Viton: 102-074  
Aflas: 102-076



**Drum Valve Coupler  
Body O-Ring \***  
EPDM: 102-061  
Viton: 102-062  
Aflas: 102-064



**Drum Valve Coupler  
Main Gasket \***  
EPDM: 102-067  
Viton: 102-068  
Aflas: 102-078

*\* Other seal materials available on request*



### Drum Valve Pressure Test Coupler

Used to test drum pressure

Viton: 744-097

*\* Other seal materials available on request*

safe, cost-efficient, easy-to-use

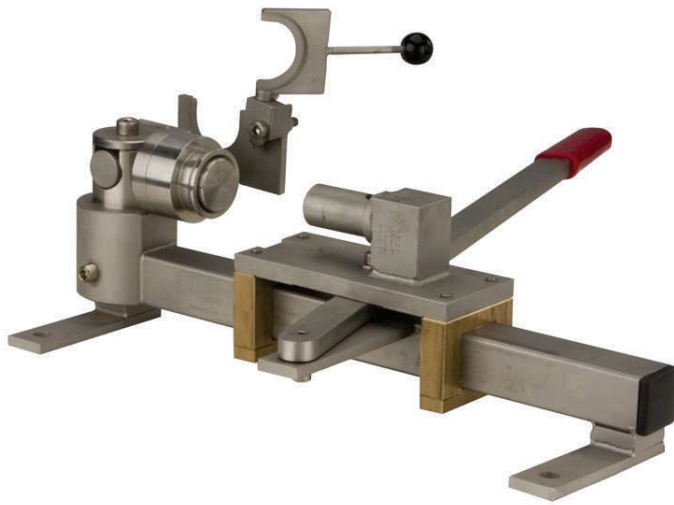
## Drum Valve System Tools

safe, cost-efficient, easy-to-use



**Drum Valve Installation & Removal Tool  
741-015**

Used to install and remove the Drum Valve from drums and IBCs



**Drum Valve Service Tool  
741-093**

Used to disassemble and reassemble Drum Valve for repair



**Drum Valve Crimping Tool**

Used to install the clinch ring on the Drum Valve



**Drum Valve De-Clinching Tool**

Used to remove the clinch ring from the Drum Valve