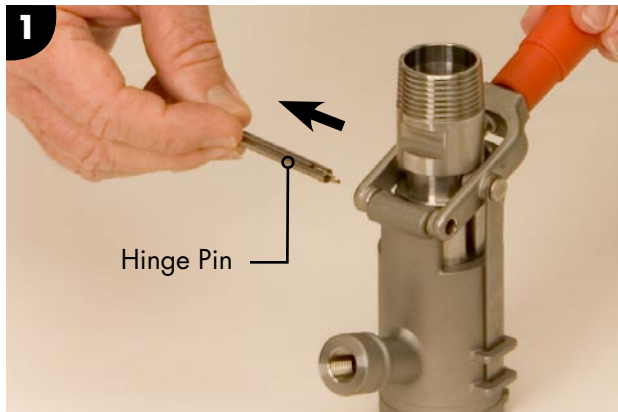


DV - Drum Valve

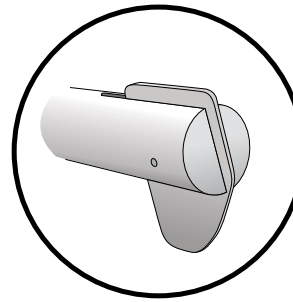
Fill Head & Heavy Duty Coupler



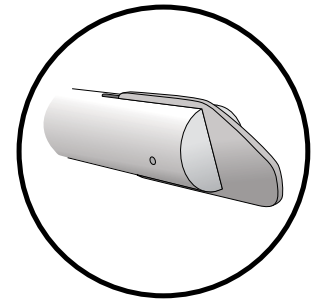
Servicing Instructions



Unlock and remove hinge pin.



Locked



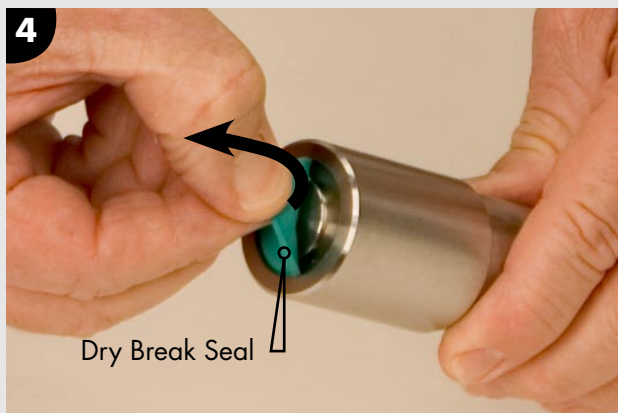
Unlocked



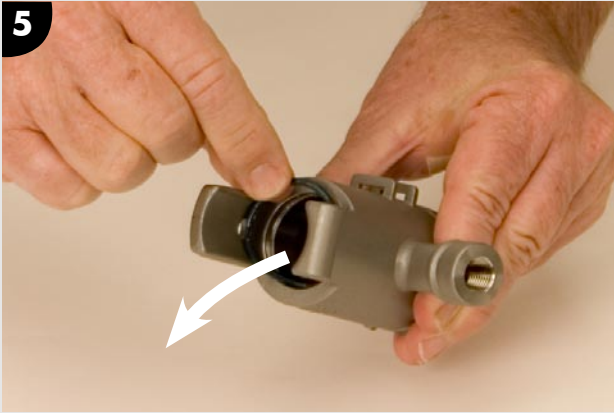
Pull handle assembly away from body.



Pull the probe assembly and body apart.



Remove dry break seal from probe.



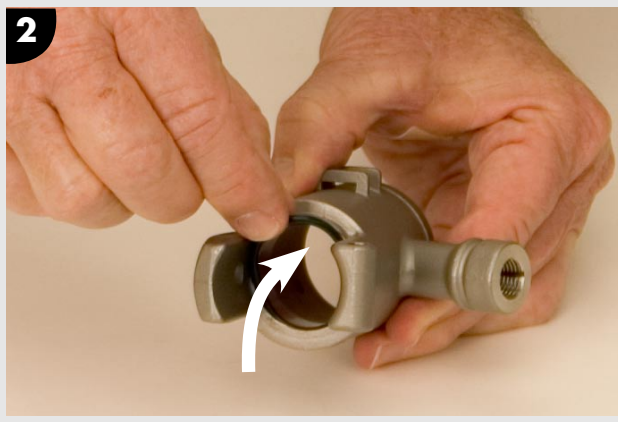
Remove O-ring from inside body.



Remove main gasket from body.

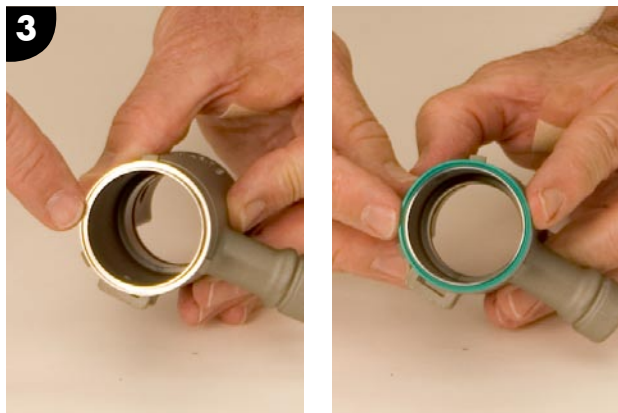


DV coupler and fill head replacement parts. Do not reuse old components. Clean body in soap solution to remove dirt and debris before assembly.



Install new O-ring seal into groove.

NOTE: Lubricate O-ring seal with silicon grease prior to installing.

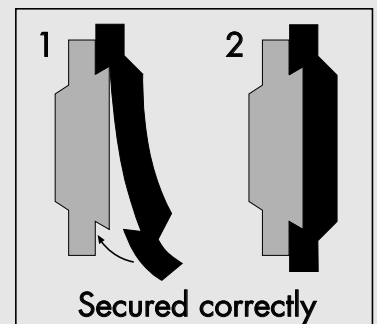


Clean foreign debris from groove before installing new main gasket in the groove on the body.



Replace dry break seal.

NOTE: Seal must be secured over groove for proper installation.

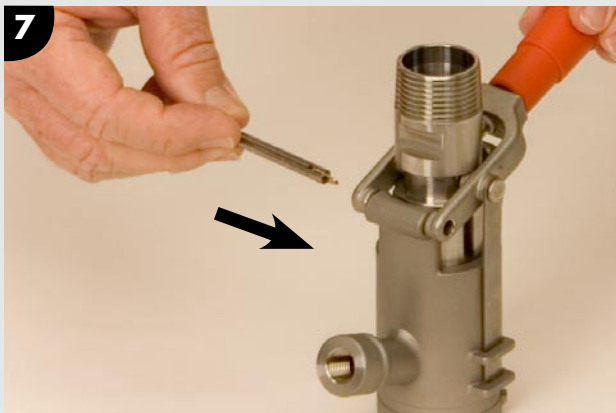




Push probe assembly into body.

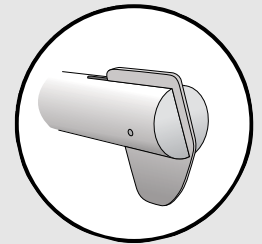


Reinstall handle assembly into body. Ensure that the locking arm is in the locking arm guide.



Replace the hinge pin.

NOTE: Lock hinge pin securely.



Locked



Correctly assembled Fill Head and Heavy Duty Coupler.